
BUCKEYE CRUISE FOR CANCER

Presents

A NEW DAWN

Sponsorship Opportunities



SILVERSEA SILVER DAWN

February 27 - March 6, 2023

7-NIGHT SAILING FROM SAN JUAN, PUERTO RICO



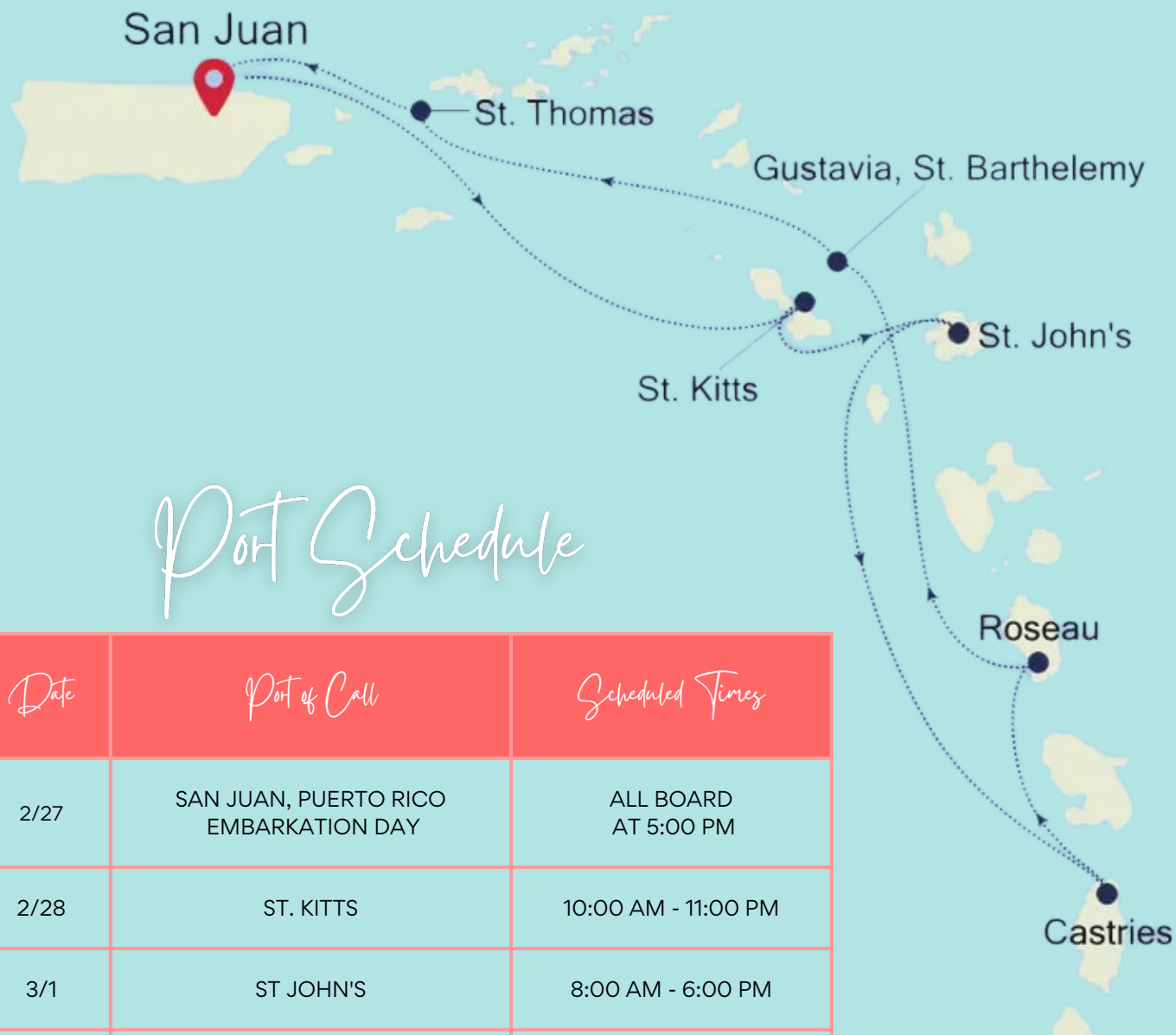
ABOUT US

A new world of luxury is waiting aboard Silver Dawn. With luxurious suites, outstanding itinerary, plus cutting-edge design and technology, Silver Dawn sets new standards of luxury. Let's wake up to a "New Dawn" of fundraising for the future!

Silversea's oceanview suites are some of the most spacious in luxury cruising. All include the services of a butler thanks to the highest service ratio at sea and almost all have a private teak veranda so that you can breathe in the fresh sea air by merely stepping outside your door.

Sailing Itinerary

SILVERSEA SILVER DAWN



Port Schedule

Date	Port of Call	Scheduled Times
2/27	SAN JUAN, PUERTO RICO EMBARKATION DAY	ALL BOARD AT 5:00 PM
2/28	ST. KITTS	10:00 AM - 11:00 PM
3/1	ST JOHN'S	8:00 AM - 6:00 PM
3/2	ST. LUCIA	8:00 AM - 10:00 PM
3/3	ROSEAU/DOMINICA	8:00 AM - 7:00 PM
3/4	GUSTAVIA, ST. BARTHELEMY	8:00 AM - 11:00 PM
3/5	ST. THOMAS	8:00 AM - 6:00 PM
3/6	SAN JUAN, PUERTO RICO DISEMBARKATION DAY	8:00 AM

Ports of Call

SILVERSEA SILVER DAWN



Monday, February 27, 2023

SAN JUAN, PUERTO RICO



Tuesday, February 28, 2023

ST. KITTS (BASSETERRE)
SAINT KITTS AND NEVIS



Wednesday, March 1, 2023

ST JOHN'S
ANTIGUA AND BARBUDA



Thursday, March 2, 2023

CASTRIES (ST. LUCIA)

Ports of Call

SILVERSEA SILVER DAWN



Friday, March 3, 2023

ROSEAU - DOMINICA



Saturday, March 4, 2023

GUSTAVIA, ST. BARTHELEMY



Sunday, March 5, 2023

ST. THOMAS



Monday, March 6, 2023

SAN JUAN, PUERTO RICO

Suites

SILVERSEA SILVER DAWN



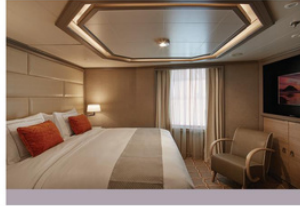
OWNER'S SUITE

Available as a one-bedroom configuration or as a two-bedroom by adjoining with a Panorama suite (as illustrated)

ONE BEDROOM: 947-1055 SQ FT / 88-98 M²
INCLUDING VERANDA (129 SQ FT / 12 M²)

TWO BEDROOM: 1281-1389 SQ FT / 119-129 M²
INCLUDING VERANDA (129 SQ FT / 12 M²)

- Large veranda with patio furniture and floor-to-ceiling glass doors; bedroom two has additional large picture window
- Living room with sitting area; bedroom two has additional sitting area
- Separate dining area
- Twin beds or king-sized bed; bedroom two has additional twin beds or queen-sized bed
- Marble bathroom with double vanity, separate shower and full-sized bath, plus a powder room; bedroom two has additional marble bathroom with shower
- Custom-made luxury bed mattresses
- Walk-in wardrobe(s) with personal safe
- Vanity table(s)
- Writing desk(s)
- One 55" / 140 cm and one 40" / 102 cm flat-screen HD TVs in main suite, plus one 40" / 102 cm flat-screen HD TV in bedroom two
- Interactive Media Library
- Bose® Sound system with bluetooth connectivity
- Illy® espresso machine
- Unlimited Premium Wifi



GRAND SUITE

Available as a one-bedroom configuration or as two bedrooms by adjoining with a Veranda Suite (as illustrated).

DECK 8:

ONE BEDROOM: 1572 SQ FT / 146 M²
INCLUDING VERANDA: (570 SQ FT / 53 M²)
TWO BEDROOM: 1970 SQ FT / 183 M²
INCLUDING VERANDA: (635 SQ FT / 59 M²)

DECK 9:

ONE BEDROOM: 1472 SQ FT / 137 M²
INCLUDING VERANDA: (474 SQ FT / 44 M²)
TWO BEDROOM: 1873 SQ FT / 174 M²
INCLUDING VERANDA: (538 SQ FT / 50 M²)

- Two verandas with patio furniture and floor-to-ceiling glass doors; bedroom two has additional veranda
- Living room with convertible sofa to accommodate an additional guest
- Sitting area; bedroom two has additional sitting area
- Separate dining area
- Twin beds or king-sized bed; bedroom two has additional twin beds or queen-sized bed
- Marble bathroom with double vanity, separate shower and full-sized bath, plus a powder room; bedroom two has additional marble bathroom with full-sized bath
- Custom-made luxury bed mattresses
- Walk-in wardrobe(s) with personal safe
- Vanity table(s)
- Writing desk(s)
- One 55" / 140 cm and one 40" / 102 cm flat-screen HD TVs in main suite, plus one 40" / 102 cm flat-screen HD TV in bedroom two
- Interactive Media Library
- Bose® Sound system with bluetooth connectivity
- Illy® espresso machine
- Unlimited Premium Wifi



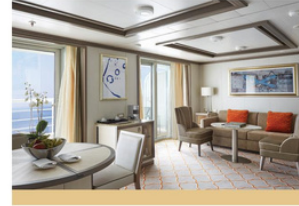
ROYAL SUITE

Available as a one-bedroom configuration or as a two-bedroom by adjoining with a Veranda suite (as illustrated)

ONE BEDROOM: 1130 SQ FT / 105 M²
INCLUDING VERANDA (129 SQ FT / 12 M²)

TWO BEDROOM: 1528 SQ FT / 142 M²
INCLUDING VERANDA (194 SQ FT / 18 M²)

- Large veranda with patio furniture and floor-to-ceiling glass doors; bedroom two has additional veranda
- Living room with convertible sofa to accommodate an additional guest
- Sitting area; bedroom two has additional sitting area
- Separate dining area
- Twin beds or king-sized bed; bedroom two has additional twin beds or queen-sized bed
- Marble bathroom with double vanity, separate shower and full-sized bath, plus a powder room; bedroom two has additional marble bathroom with full-sized bath
- Custom-made luxury bed mattresses
- Walk-in wardrobe(s) with personal safe
- Vanity table(s)
- Writing desk(s)
- One 55" / 140 cm and one 40" / 102 cm flat-screen HD TVs in main suite, plus one 40" / 102 cm flat-screen HD TV in bedroom two
- Interactive Media Library
- Bose® Sound system with bluetooth connectivity
- Illy® espresso machine
- Unlimited Premium Wifi



SILVER SUITE

Available as a one-bedroom configuration or as a two-bedroom by adjoining with a Panorama suite (as illustrated). One suite available as a wheelchair accessible suite.

ONE BEDROOM: 786 SQ FT / 73 M²
INCLUDING VERANDA (129 SQ FT / 12 M²)

TWO BEDROOM: 1119 SQ FT / 104 M²
INCLUDING VERANDA (129 SQ FT / 12 M²)

- Veranda with patio furniture and floor-to-ceiling glass doors
- Living room with convertible sofa to accommodate an additional guest
- Sitting area
- Separate dining area
- Twin beds or king-sized bed
- Marble bathroom with double vanity, full-sized bath, separate shower; bedroom two has additional marble bathroom with full-sized bath
- Wheelchair accessible suite has a marble bathroom with vanity and separate shower (no full-sized bath as illustrated)
- Walk-in wardrobe with personal safe
- Vanity table
- Writing desk
- One 55" / 140 cm and one 40" / 102 cm flat-screen HD TVs in main suite; plus one 40" / 102 cm flat-screen HD TV in bedroom two
- Interactive Media Library
- Bose® Sound system with bluetooth connectivity
- Illy® espresso machine
- Unlimited Premium Wifi



DELUXE VERANDA SUITE SUPERIOR VERANDA SUITE CLASSIC VERANDA SUITE

Some Veranda Suites accommodate three guests. Deluxe Verandas offer preferred central location with identical accommodations to Classic and Superior Verandas.

387 SQ FT / 36 M²
INCLUDING VERANDA (64 SQ FT / 6 M²)

- Veranda with patio furniture and floor-to-ceiling glass doors
- Sitting area
- Twin beds or queen-sized bed
- Marble bathroom with vanity, full-sized bath, separate shower
- Walk-in wardrobe with personal safe
- Writing desk
- One 40" / 102 cm flat-screen HD TV
- Interactive Media Library
- Unlimited Standard Wifi



All Suites Include:

- Butler service in every suite
- Unlimited Free Wifi
- Personalized service – nearly one crew member for every guest
- Multiple restaurants, diverse cuisine, open-seating dining
- Beverages in-suite and throughout the ship, including champagne, wine and spirits
- Excursions in each port
- 24-hour dining service
- Onboard entertainment
- Onboard gratuities

Deck Plan

SILVERSEA SILVER DAWN

SILVER DAWN – Deck Plans



DECK 4

Atlantide
Kaiseki
S.A.L.T. Kitchen
S.A.L.T. Bar
S.A.L.T. Lab



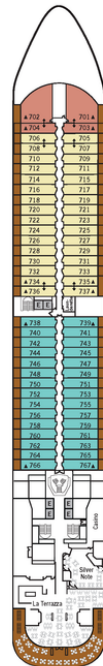
DECK 5

Reception/
Guest Relations
Shore Concierge
Dolce Vita
Venetian Lounge
Cruise Consultant



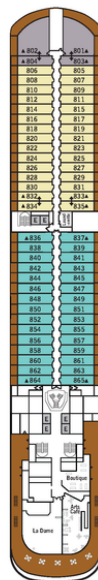
DECK 6

Beauty Spa
Fitness Centre



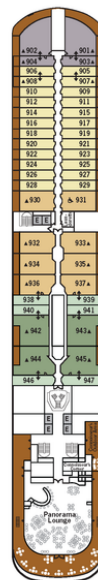
DECK 7

La Terrazza
Silver Note
Casino



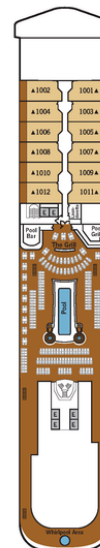
DECK 8

Arts Café
Boutique
La Dame



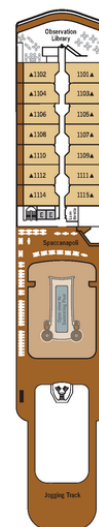
DECK 9

Panorama Lounge
Connoisseur's Corner



DECK 10

Pool Deck
Pool Bar
The Grill
Whirlpool Area



DECK 11

Observation Library
Spaccanapoli
Jogging Track

SUITE CATEGORIES

Owner's Suite	●
Grand Suite	●
Royal Suite	●
Silver Suite	●
Deluxe Veranda Suite	●
Superior Veranda Suite	●
Classic Veranda Suite	●
Panorama Suite	●
Vista Suite	●

SPECIFICATIONS

Crew	411
Officers	European
Guests	596
Tonnage	40,700
Length	698 Feet / 212.8 Metres
Width	86 Feet / 27 Metres
Speed	19.8 Knots
Passenger Decks	8
3rd Guest Capacity	▲
Connecting Suites	↑↓
Wheelchair Accessible Suites	♿
407, 409, 417, 931	
Built	2021
Registry	Bahamas

Deckplans are for illustration purposes only and may be subject to change

Suite diagrams shown are for illustration purposes only and may vary from actual square footage. Please refer to suite specifications for square footage.



ONBOARD

All-Inclusive Beverages



*Complimentary
Beverages
Everywhere!*

ENJOY A GLASS – OR EVEN A BOTTLE – OF CHAMPAGNE, WINE, BEER, OR PREMIUM SPIRITS ON THE HOUSE. SILVERSEA ALSO MAKES SURE THAT YOU’RE WELL-STOCKED WITH WATER, JUICES, AND SOFT DRINKS IN BOTH THE PUBLIC BARS AND YOUR SUITE.

THE SILVERSEA PROMISE IS TO KEEP YOUR MINI-BAR FULL OF YOUR FAVORITE DRINKS – WHETHER THESE ARE ALCOHOLIC BEVERAGES (INCLUDING WINE, SPIRITS, AND MIXERS) OR COLD BOTTLES OF WATER FOR HOT, SUNNY DAYS! YOUR BUTLER WILL REPLENISH DAILY, BUT IF YOU WANT A LITTLE EXTRA, SIMPLY ASK AND WE’LL MAKE SURE YOU GET EXACTLY WHAT YOU WANT. NO WISH IS TOO BIG OR TOO SMALL.

ONBOARD

Dedicated Butler Service



SILVERSEA OFFERS AROUND-THE-CLOCK, DEDICATED BUTLER SERVICE IN ALL SUITES. GUESTS AT SILVERSEA ARE ASSURED THEIR EVERY NEED IS WELL SERVED - WITH THOUGHT, SURPRISE, AND CHARM. BREEZE THROUGH EMBARKATION AND STEP INTO THE WARM WELCOME OF OUR WHITE-GLOVED STAFF. ENJOY A GLASS OF BUBBLY WHILE BEING ESCORTED TO YOUR SUITE. ALLOW SILVERSEA TO INDULGE YOU WITH OUR UNDIVIDED ATTENTION

YOU'LL WONDER HOW YOU EVER MANAGED BEFORE! AS YOU ARE LED TO YOUR SUITE, YOU'LL UNDERSTAND WHY THE SILVERSEA BUTLER SERVICE IS THE BEST ON THE SEA. LET THEM TAKE THE LEAD AS THEY EXPLAIN THE FABULOUS SERVICE THEY OFFER; NO TASK IS TOO BIG OR TOO SMALL! THEIR TEAM OF POLITE, PROFESSIONAL, AND HIGHLY LIKABLE BUTLERS REALLY IS THE DIFFERENCE BETWEEN A GREAT CRUISE AND AN AMAZING ONE! FROM UNPACKING YOUR SUIT CASE AT THE BEGINNING OF YOUR VOYAGE TO SHINING YOUR SHOES TO FACILITATING YOUR LAUNDRY REQUESTS, THEIR TEAM OF BUTLERS IS THERE TO SERVE YOU. THEY WILL MAKE SURE YOUR ROOM IS ALWAYS IN PRISTINE CONDITION, ENSURE WHITE TABLECLOTH IN-SUITE SERVICE, DEAL WITH ANY SPECIAL REQUEST YOU MIGHT HAVE AND GUARANTEE YOUR CUSTOMIZED IN-SUITE BAR IS ALWAYS FULL!

AROUND THE SHIP

Public Areas



1 S.A.L.T. BAR
Locally-inspired cocktails and drinks



2 S.A.L.T. LAB
interactive space where guests can deep-dive into local culinary techniques through workshops, lectures and cooking demonstrations

3 SILVERSEA CASINO
Enjoy a variety of table games and slot machines

4 PANORAMA LOUNGE
A perfect place to break away to, a social place to meet, or an evening venue to partake in a cocktail



5 DOLCE VITA
Dolce Vita is a relaxed, refined bar with a nightly piano player playing all your favorite tunes.

6 OTIUM SPA
Otium Spa offers the very latest in beauty therapy



7 FITNESS CENTRE
elite design with programs that are specifically created for your body type and needs.

8 CONNOISSEUR'S CORNER
This is where the cigar aficionados can meet and mingle to share their iconic passion.

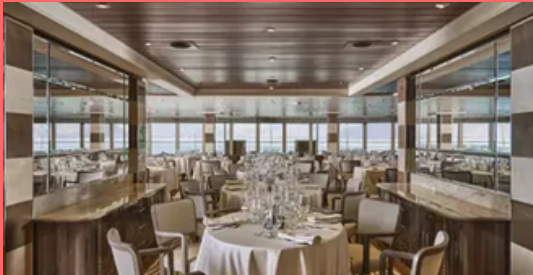


9 BOUTIQUE
Silversea's duty-free boutiques offers our guests a carefully curated selection of cutting edge fashions, jewelry, accessories, fine perfumes, cosmetics

10 POOL DECK & JACUZZI AREA
Take a dip in the pool, relax in one of the whirlpools or simply soak up the view from one of the sunbeds

AROUND THE SHIP

Dining Options



1 S.A.L.T. KITCHEN
Silver Dawn's exclusive destination
focused restaurant

2 SPACCANAPOLI
Italian Pizzeria

3 THE GRILL
Outdoor Bar and grille, perfect for evening
cocktails

4 ATLANTIDE
Elegant bar & grill incorporates the best
the sea has to offer

5 LA TERRAZZA
Authentic Italian & fresh sustainable
ingredients

6 SILVER NOTE
Small plate tapas style international cuisine

7 LA DAME
Silversea's signature french restaurant*

8 KAISEKI
Japanese experience & cuisine*

**Additional charges apply*

ASHORE

All-Inclusive Shore Excursions

SAN JUAN, PUERTO RICO

Sitting on the north coast of this lush, tropical island, San Juan is the second settlement founded by European settlers in the Caribbean, and the oldest city under US jurisdiction. The stocky walls and watchtowers here have stood the test of time. San Juan is a beach-blessed star of these turquoise waters. With more than 500 years of European history, Old San Juan gleams in Puerto Rico's sunshine, with sugar-almond painted facades and ankle-testing cobbled lanes. Soak up the culture at rum-fuelled parties and salsa dances on this Spanish-culture-infused island, or recline into afternoon relaxation sessions on sensational slivers of gleaming sand.

SAINT KITTS AND NEVIS

Included Shore Excursions: St. Kitts Scenic Railway, Culinary Experience & Rum Tasting, Catamaran Snorkel and Cruise, Best of St. Kitts, Sky Safari Zip-Lining, Rainforest Hike, Gardens & Batik, St. Kitts Highlights, and 4x4 Adventure & Relax at the Beach

ST JOHN'S - ANTIGUA AND BARBUDA

Included Shore Excursions: Antigua Highlights, Sailing to Paradise Reef, Snorkeling and Exploring Beaches, Antigua Highlights, Zipline Adventure, Kayaking and Snorkeling at North Sound National Park, Full Day Catamaran Tour to Great Bird Island

GASTRIES (ST. LUCIA)

Included Shore Excursions: St Lucia Highlights, Island Sights & Rhythms, Sailing the West Coast by Catamaran and Snorkeling, Experience the Rainforest: Aerial Tram Adventure, Cruising St Lucian Coasts at Sunset, Jeep Safari, and Beach Break, Hiking the Private Nature Reserve of Mt Pimard, Let's Make Chocolate, Safari Jeep, Biking and Waterfall Adventure



ASHORE

All-Inclusive Shore Excursions

ROSEAU - DOMINICA

Included Shore Excursions: Roseau Highlights by Trolley Train, Dominica & Rainforest Drive, Whale and Dolphin Adventure Sightings, Bois Cotlette Estate: Heritage Tour, Chocolate Experience at Bois Cotlette, Trafalgar Falls, Rainforest & Chocolate, Emerald Pool and Mero Beach, Trafalgar Falls & Jungle Spa Experience

GUSTAVIA, ST. BARTHELEMY

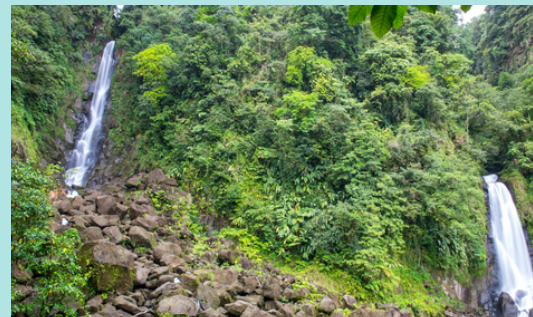
Included Shore Excursions: Snorkeling Adventure by Zodiac, Helene's Tour - St. Barths Highlights by Minivan, Catamaran Sailing at Sunset, Panoramic St. Barts, Semi-Sub Exploration

ST. THOMAS

Included Shore Excursions: Kayak, Hike, & Snorkel at Cas Cay, Castaway Shipwreck Cove Sail & Snorkel, Magen's Bay & Sky-Ride to Paradise Point, St. Thomas Panoramic & Mountain Top Rum Tasting

SAN JUAN, PUERTO RICO

Kick back on the beach, or satisfy a lust for adventure by exploring sprawling mangrove forests. The magic of sea kayaking after dark here is an experience you won't forget. Break the waves with your oar, and watch as the waters illuminate with neon color, as bioluminescence creates a mystical, peaceful spectacle. Pocked limestone cliffs and karst landscapes add rugged contrast to the serenity of the beaches, and you can walk into folds of the earth in sea-carved caves, or across cliffs to hidden views of the Caribbean's expanse.

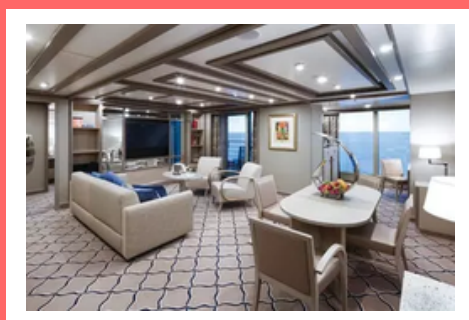


A NEW DAWN

Presenting Sponsor



\$100,000



ALL SPONSORSHIPS INCLUDE:

- CUSTOM SPONSOR PENNANT
- AUTOGRAPHED FOOTBALL BY ALL ATHLETES ON BOARD
- YOU/YOUR COMPANY NAME/LOGO TO APPEAR ON BUCKEYE CRUISE WEBSITE
- AD IN THE ON-BOARD SPONSOR BOOK (FULL PAGE)
- OPTION TO PURCHASE ADDITIONAL VERANDA STATEROOMS

MAST FLAG

YOU WILL RECEIVE THE UNIQUE OPPORTUNITY TO FLY YOUR FAMILY NAME OR COMPANY NAME FROM THE SHIP! THE FLAG WILL COME HOME WITH YOU FOR A MEMORY OF A LIFETIME!

STATEROOMS

INCLUDED IN THIS SPONSORSHIP ARE ONE TWO-BEDROOM OWNER'S OR TWO-BEDROOM GRAND SUITE, ONE SILVER SUITE, AND ONE DELUXE VERANDA

AIR SEATS

FOUR ROUND-TRIP, FIRST-CLASS AIR SEATS AND FOUR ROUND-TRIP COACH CLASS AIR SEATS

BRAND RECOGNITION

- NAMING RIGHTS FOR THE 2023 SAILING
- 60 SECOND ONBOARD PROMOTIONAL COMMERCIAL THROUGHOUT THE CRUISE
- GENERAL VERBAL RECOGNITION ONBOARD THE SHIP
- RECOGNITION ON THE BUCKEYE CRUISE SOCIAL MEDIA FEEDS
- YOUR NAME/COMPANY NAME/LOGO TO APPEAR ON THE BUCKEYE CRUISE FOR CANCER MARKETING MATERIALS

VIP SAIL AWAY PARTY

EIGHT GUESTS TO THIS EXCLUSIVE VIP SAIL AWAY

ATHLETE EXCLUSIVES

EIGHT GUESTS WILL JOIN ATHLETES FOR SELECT EXCURSION AND A PRIVATE DINNER ONBOARD THE SHIP

BASKETBALL SUITE

YOU AND 10 GUESTS WILL ATTEND AN OSU BIG TEN BASKETBALL GAME DURING THE 2022-23 SEASON IN A SUITE. INCLUDES FOOD AND DRINK

TOP DECK

Sponsor

\$75,000



ALL SPONSORSHIPS INCLUDE:

- CUSTOM SPONSOR PENNANT
- AUTOGRAPHED FOOTBALL BY ALL ATHLETES ON BOARD
- YOU/YOUR COMPANY NAME/LOGO TO APPEAR ON BUCKEYE CRUISE WEBSITE
- AD IN THE ON-BOARD SPONSOR BOOK (FULL PAGE)
- OPTION TO PURCHASE ADDITIONAL VERANDA STATEROOMS

STATEROOMS

INCLUDED IN THIS SPONSORSHIP ARE TWO SILVER SUITES & ONE DELUXE OR SUPERIOR VERANDA

AIR SEATS

FOUR ROUND-TRIP, FIRST-CLASS AIR SEATS AND TWO ROUND-TRIP COACH CLASS AIR SEATS

BRAND RECOGNITION

- MAJOR EVENT SPONSOR RECOGNITION
- 60 SECOND ONBOARD PROMOTIONAL COMMERCIAL THROUGHOUT THE CRUISE
- GENERAL VERBAL RECOGNITION ONBOARD THE SHIP
- RECOGNITION ON THE BUCKEYE CRUISE SOCIAL MEDIA FEEDS

VIP SAIL AWAY PARTY

SIX GUESTS TO THIS EXCLUSIVE VIP SAIL AWAY

ATHLETE EXCLUSIVES

SIX GUESTS WILL JOIN ATHLETES FOR SELECT EXCURSION AND A PRIVATE DINNER ONBOARD THE SHIP



CAPTAIN'S

Sponsor

\$50,000



ALL SPONSORSHIPS INCLUDE:

- CUSTOM SPONSOR PENNANT
- AUTOGRAPHED FOOTBALL BY ALL ATHLETES ON BOARD
- YOU/YOUR COMPANY NAME/LOGO TO APPEAR ON BUCKEYE CRUISE WEBSITE
- AD IN THE ON-BOARD SPONSOR BOOK (FULL PAGE)
- OPTION TO PURCHASE ADDITIONAL VERANDA STATEROOMS

STATEROOM

INCLUDED IN THIS SPONSORSHIP ARE TWO SILVER SUITES OR ONE SILVER SUITE AND TWO CLASSIC VERANDAS.

AIR SEATS

FOUR ROUND-TRIP, COACH CLASS AIR SEATS

BRAND RECOGNITION

- PORT SPONSOR RECOGNITION
- 30 SECOND ONBOARD PROMOTIONAL COMMERCIAL THROUGHOUT THE CRUISE
- GENERAL VERBAL RECOGNITION ONBOARD THE SHIP
- RECOGNITION ON THE BUCKEYE CRUISE SOCIAL MEDIA FEEDS

VIP SAIL AWAY PARTY

FOUR OR SIX GUESTS TO THIS EXCLUSIVE VIP SAIL AWAY

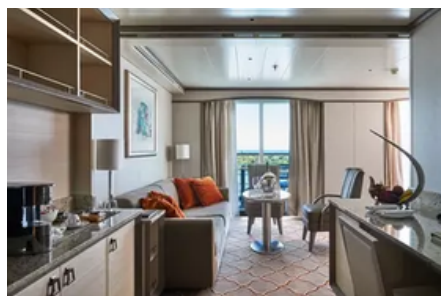
ATHLETE EXCLUSIVES

FOUR GUESTS WILL JOIN ATHLETES FOR SELECT EXCURSION AND A PRIVATE DINNER ONBOARD THE SHIP



SILVER *Sponsor*

\$25,000



ALL SPONSORSHIPS INCLUDE:

- CUSTOM SPONSOR PENNANT
- AUTOGRAPHED FOOTBALL BY ALL ATHLETES ON BOARD
- YOU/YOUR COMPANY NAME/LOGO TO APPEAR ON BUCKEYE CRUISE WEBSITE
- AD IN THE ON-BOARD SPONSOR BOOK (HALF PAGE)
- OPTION TO PURCHASE ADDITIONAL VERANDA STATEROOMS

STATEROOM

INCLUDED IN THIS SPONSORSHIP IS ONE SILVER SUITE

AIR SEATS

TWO ROUND-TRIP COACH CLASS AIR SEATS

BRAND RECOGNITION

- SPONSOR RECOGNITION ON BOARD
- 30 SECOND ONBOARD PROMOTIONAL COMMERCIAL THROUGHOUT THE CRUISE
- RECOGNITION ON THE BUCKEYE CRUISE SOCIAL MEDIA FEEDS

ATHLETE EXCLUSIVES

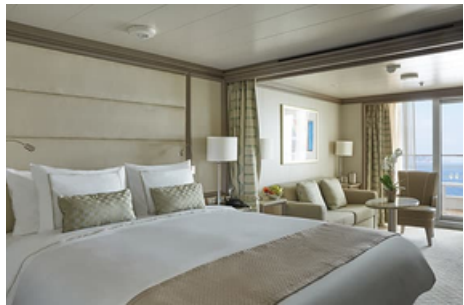
TWO GUESTS WILL JOIN ATHLETES FOR SELECT EXCURSION



FIRST MATE

Sponsor

\$15,000



STATEROOM

INCLUDED IN THIS SPONSORSHIP IS ONE
DELUXE VERANDA

BRAND RECOGNITION

- SPONSOR RECOGNITION ON BOARD
- RECOGNITION ON THE BUCKEYE CRUISE
SOCIAL MEDIA FEEDS

ALL SPONSORSHIPS INCLUDE:

- CUSTOM SPONSOR
PENNANT
- AUTOGRAPHED
FOOTBALL BY ALL
ATHLETES ON BOARD
- YOU/YOUR COMPANY
NAME/LOGO TO APPEAR
ON BUCKEYE CRUISE
WEBSITE
- AD IN THE ON-BOARD
SPONSOR BOOK
(QUARTER PAGE)



CUSTOM *Sponsorship*

ALL SPONSORSHIPS INCLUDE:

- CUSTOM SPONSOR PENNANT
- AUTOGRAPHED FOOTBALL BY ALL ATHLETES ON BOARD
- YOU/YOUR COMPANY NAME/LOGO TO APPEAR ON BUCKEYE CRUISE WEBSITE
- AD IN THE ON-BOARD SPONSOR BOOK (SIZE DEPENDS ON ENTRY LEVEL)
- OPTION TO PURCHASE ADDITIONAL VERANDA STATEROOMS (DEPENDS ON ENTRY LEVEL)

THE BUCKEYE CRUISE FOR CANCER CAN CUSTOMIZE ANY SPONSORSHIP TO MEET YOUR NEEDS. PACKAGES CAN INCLUDE ADDITIONAL STATEROOMS, AIR SEATS, ON-BOARD RECOGNITION, PRIVATE COCKTAIL RECEPTIONS, GIFTS FOR CRUISERS OR VIPS AND PRIVATE EXCURSIONS, AND/OR DINNERS



VERANDA PRICING

Stateroom Only

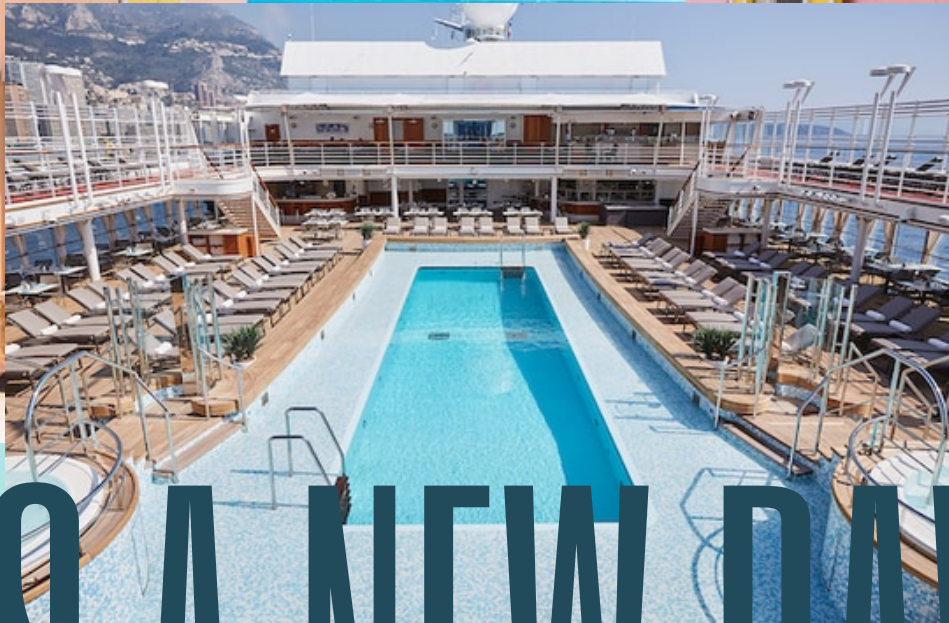
DELUXE VERANDA	\$5400
SUPERIOR VERANDA	\$5100
CLASSIC VERANDA	\$4900

PRICING IS PER PERSON AND INCLUDES ALL ALCOHOLIC & NON-ALCOHOLIC BEVERAGES, ALL MEALS, INTERNET, A SHORE EXCURSION PER PERSON/PER PORT, A BUTLER PER STATEROOM, ALL PORT CHARGES, TAXES, AND PRE-PAID GRATUITIES.

EVERY VERANDA SUITE IS 387 SQ FT AND INCLUDES A 64 FT VERANDA. (DECKS 5-9)



Silver Dawn



IT'S A NEW DAWN



TO BOOK YOUR SPONSORSHIP PACKAGE OR FOR MORE INFORMATION
PLEASE CALL, 614-792-6204 OR VISIT BUCKEYECRUISE.COM